



CROYDON
www.croydon.gov.uk



SEND Local Area Newsletter

July 2024



April 2024 Issue 4

Article 1: Year 6 SEN & Safeguarding Croydon Schools Transition Event.....	1
Article 2: Croydon Active Voices - AGM and Empowerment Conference.....	2
Article 3: Bensham Manor School - Ofsted Inspection.....	3
Article 4: Croydon SEND Youth Voice Forum - Croydon Superstars.....	4
Article 5: Family Hubs - Eating Well for Less Workshop/Core Training.....	5
Article 6: Early Positive Approaches to support (E-PATs) Research Study.....	6
Article 7: Aerodrome Children's Centre – SEN Play and Learn 0-5.....	7
Article 8: National Literacy Trust – Walk and Talk Trail.....	8
Article 9: Croydon Holiday Activity and Food Programme.....	9
National Autistic Society - Croydon Social Groups.....	9
Article 10: Bright Futures 4 All - Summer SEND Club.....	10
Croydon's First SEND After School Club.....	11
Article 11: Croydon Mencap - Strictly Come Walking/Chill and Chat/ Family Advocacy and Support Team.....	12
Article 12: Carers Information Service - Carers Café/Carers Support Centre Choir/Exercise Class.....	13
Article 13: A Collective/Autistic Youth Hub.....	14
Article 14: Croydon Music and Arts – Inclusive Ensembles.....	15
Article 15: Crystal Palace FC - Recruitment Day.....	16
Article 16: Disabled Persons Railcard.....	17
Article 17: Family Fund - Support for Families with Disabled Children (SFDC).....	18
Article 18: Club Soda/Leisure Link.....	19
Article 19: Learning Disability Carnival.....	20
Article 20: A2ndvoice CIC.....	21

We are thrilled to announce the incredible success of the Year 6 SEN & Safeguarding Transition Event, held on Tuesday, 25th June, at the Braithwaite Hall in the Croydon Clocktower. This event brought together a remarkable gathering of dedicated professionals focused on ensuring a smooth transition for students with Special Educational Needs and Disabilities (SEND) and other vulnerable students moving from Year 6 to Year 7.

The collaboration among primary and secondary SENCOs and leads from all Croydon schools, and neighbouring out-of-borough secondaries was truly inspiring. This united effort highlighted the strength and dedication of our educational community in prioritizing the needs of these students during this crucial transitional phase.

Throughout the afternoon, attendees engaged in meaningful discussions and shared vital information about the students, ensuring strong transitions between primary and secondary education.

We would like to extend our heartfelt thanks to everyone who participated and contributed to the success of this event. Your commitment and collaboration are essential in making a positive difference in the lives of these young individuals.



Croydon Active Voices

Annual General Meeting and Empowerment Conference



We recently attended the Croydon Active Voices AGM and Empowerment Conference which was a great day for networking and bringing people together.

There were presentations from Croydon Localities SEND Support, Professor Nick Gore talking about the Early Positive Approaches to Support (EPATS) programme and Encounter Occupational Therapy with Andrea Richards and Michelle Herring.

There was representation from parents/carers, professionals and the local community and a real chance for learning, discussions and most of all to support our parent carer forum.

There were a range of stalls providing information on local services, activities and support.

This included:

- Croydon Mencap
- Carers Information Service
- David Lean Cinema
- Croydon Music and Arts
- National Autistic Society – Croydon Social Groups
- A Collective and Autistic Youth Club
- Croydon Council Independent travel training
- Waddon Youth Centre Post 19 Pathways Programme

Not to mention the amazing catering from Willows.



Bensham Manor School - Ofsted Inspection

"Our Ofsted inspection was June 5th and 6th 2024. We were awaiting a full inspection, having previously been inspected under a Section 8 in March 2023.

The initial phone call was from the Lead inspector and this simply checked that the inspection was ok to go ahead and for him to make a note of anything such as planned trips etc. This call came just before 10am. The longer call was at 11.30am and lasted about one hour and fifteen minutes.

I gave the contact of the school, what my assessment of the school was and areas of development. I had all of my SLT with me on the call which was welcomed. We had a team of three on Day 1 and 2 on Day 2.

I was able to choose the Deep Dive areas, within reason. He was keen to see foundation subjects so we agreed on Food Technology and PE - the other Deep Dive areas were English, Reading and Phonics and PSHE. We have a Post 16 so that too was an area of focus.

A member of SLT was present at each Deep Dive meeting. They roughly lasted between 30 and 45 minutes except for PSHE which was over an hour. The team only wanted to focus on lessons that were a Deep Dive subject. They did see some other lessons but only when there were no lessons from the Deep Dive areas.

The primary focus of Day 1 was the curriculum - with a major focus on just implementation. They spoke to pupils, observed lessons but the biggest scrutiny was of books and folders. They looked at topics being taught at different levels - for example how was Macbeth taught to a range of pupils of differing academic ability - we had to explain and then show the evidence in the books.

Day 1 also looked at Safeguarding, the SCR (lots of depth around the Right to Work in the UK checks) and Safer Recruitment (recruitment and online checks were drilled down). They also met with Governors.

Day 2 still focused on the curriculum up until about break time. There were also meetings on Behaviour/Attendance and Personal Development. They met with a staff group, the School Council and a group of pupils from a PSHE lesson. They scrutinised the staff and parent survey results. The topic of workload is huge - lots of people asked about workload and my response to reducing it.

I did find the process very tough. The level of scrutiny between a short and full inspection cannot be compared. What helped is that I was confident in the judgement I felt we should be getting as I had evidenced all the Ofsted grade descriptors so could call on that evidence when needed.

Also, the website is key and on both inspections both Leads were able to see the curriculum maps and what we are teaching which they both liked.

I did draw on the training delivered by Maggie Farrar at the Headteachers Conference earlier this year and this helped me manage my stress levels somewhat. If you did not attend I can highly recommend booking her for your SLT/Middle or Phase Leaders.

I am more than happy to chat to anyone who would like any further information or support."

- **Fiona Robinson – Headteacher, Bensham Manor School**



We'd like to congratulate Bensham Manor on their recent inspection!

Croydon SEND Youth Voice Forum

Croydon Superstars



Croydon Council and the Integrated Care Board (ICB) are dedicated to evaluating the efficiency of their services for children and young people with Special Educational Needs (SEND).

As part of this assessment of services and as preparation for a potential Local Area inspection, Croydon Council visited schools and had engagement sessions on Preparation for Adulthood with special schools' councils/ forums.

Students from Croydon College, Red Gates School, St Giles School, Bensham Manor School and St Nicholas School participated in engagement sessions led by Croydon Council on Preparation for adulthood. During these sessions, three activities took place.

Activity 1 - was a warmup game titled "Are you more like". The students were asked to decide on whether they were more like one profession or another profession. Examples ranged from Chefs, Gardeners, Police officers, Designers and Teachers. Students engaged well in this activity and thought about what professions they would consider being in when they are older.

Activity 2 - "My Future", was the main part of the session where the students had four task sheets categorised into aspects of life that students would consider whether they were ready for or needed certain skills to be prepared for adulthood. These were categorised into four main areas, linked to the National Preparation for Adulthood framework from DfE and NDTi (National Development Team for Inclusion):

- School & Work,
- Family & Friends,
- Happy & Healthy (including Mental Health and Wellbeing) and
- Skills for living.

Each worksheet had a relevant pack of images that correlated to each theme, which students had to organise into whether they have, need or sometimes have/need.

Please click [here](#) for the full impact report.

A further activity is being carried out to design a logo for the Croydon Superstars.

We will keep you all posted!



Family Hubs

Eating Well for Less Workshop

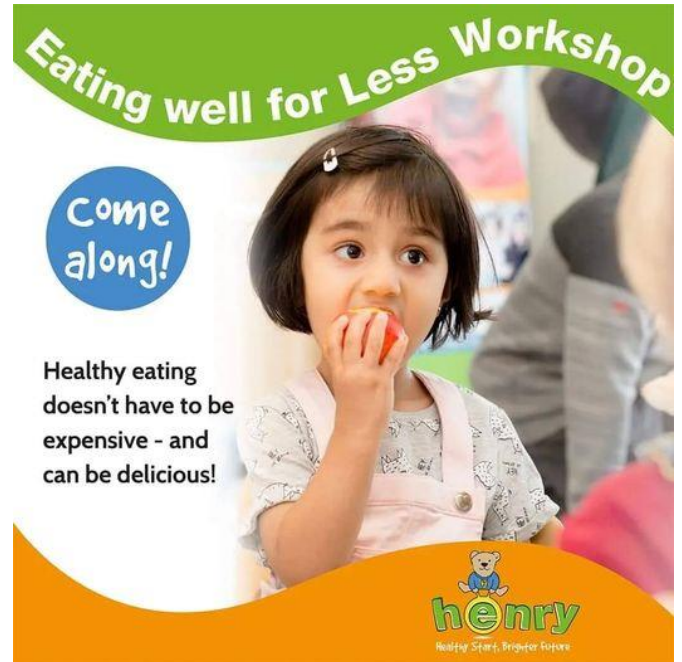
Trying to eat well and make healthy choices when shopping on a budget can seem very daunting. However, healthy choices don't need to be expensive choices. Come along to one of our free Eat Well for less workshops running over the Summer for top tips to help keep to a budget and help the whole family eat more healthily.

Monday 22nd July 10am-12pm - Woodlands Family Hub

Tuesday 20th August 10am-12pm - Online

If you are a Croydon family with children under 12, please book your place by clicking [here](#).

Please note, places are limited and need to be booked in advance.



Core Training

Calling all practitioners: We have our Core Training this August (Mon 5th & Tues 6th), at Woodlands Family Hub, 9.15-4.30pm.

Register your interest by clicking [here](#).

You can keep up to date with news and events by following the [Family Hubs Croydon](#) Facebook page.



Core training

Developing skills in using the proven HENRY approach to lifestyle change



Research shows practitioners continue to use HENRY skills 5 years later
96% feel confident to support parents to provide a happy, healthy childhood



Early Postivie Approaches to support (E-PAtS)

Research Study

If your child has additional developmental needs (diagnosis not necessary) and is **at least 18 months old but not yet 6**, you might like to take part in the E-PAtS research study.

What is E-PAtS?

E-PAtS is an 8-session group programme for families that is designed and run by families and professionals working together.

What is the E-PAtS Research Study?

We want to find out if E-PAtS helps parents and carers of children with additional developmental needs.

This is a randomised study, which means families will be selected by chance (like tossing a coin) to either attend an E-PAtS group now or in 12 months' time.

Parents can receive up to **£60 worth of vouchers** for completing questionnaires.

Croydon Mencap is taking part in the E-PAtS Study.

Location: Woodlands Children's Centre, CR2 8HD

When: 2nd October – 4th December 2024 (every Wednesday from 9.45am to 12.15pm)

To find out more please contact training@croydonmencap.org.uk or LSSJEarlySupportRCT@Kent.ac.uk.

Further information can also be found [here](#).

FUNDED BY

NIHR | National Institute for
Health and Care Research

SEN Play and Learn 0-5's (Special Educational Needs)



This session is for children who may find it overwhelming in busier environments.

We aim to provide a calm and nurturing space for children whom perhaps are sensitive to noise, have additional needs (diagnosed/undiagnosed), sensory seek, and developmental delay.

Come along and join us...
'A non judgmental safe space'

Aerodrome Children's Centre
Violet Lane, Waddon, CR0 4HN

Wednesday's 1.00-2.30pm
(fortnightly, please see timetable for dates)

<https://www.crosfieldandselhurstnursery.co.uk/Timetables/>

Sensory and soft play room
available!

If you would like more
information, please call
Selhurst on 020 8684 3777



National Literacy Trust – Walk and Talk Trail

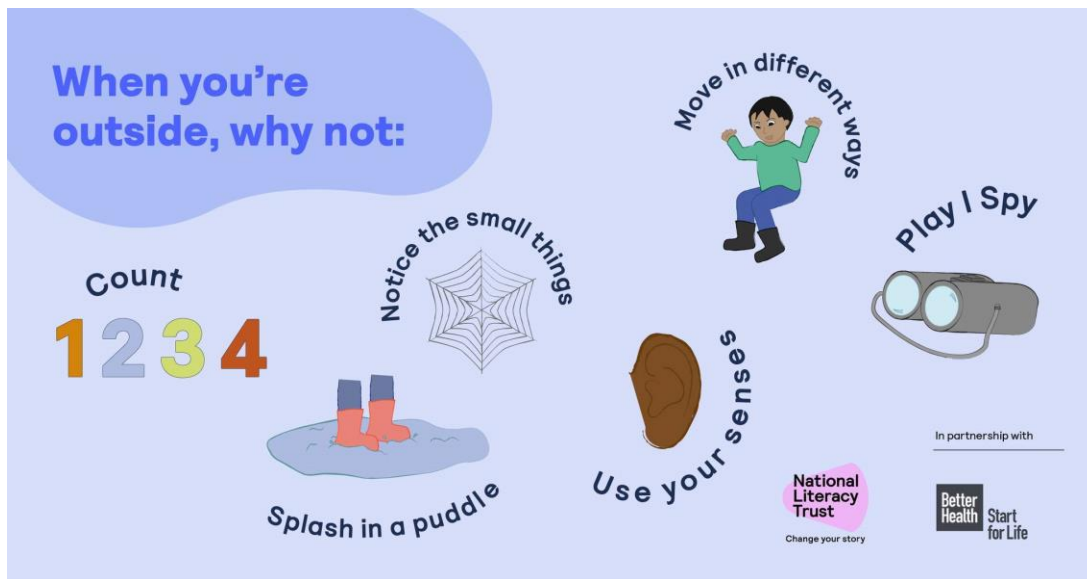
The National Literacy Trust have created a walk and talk trail, which is **FREE** for families to use.

Packed with tips and tricks to help your little one develop their language and communication skills, the trail is a great excuse to get outside with your 0 to 5 year olds and explore the surrounding area.

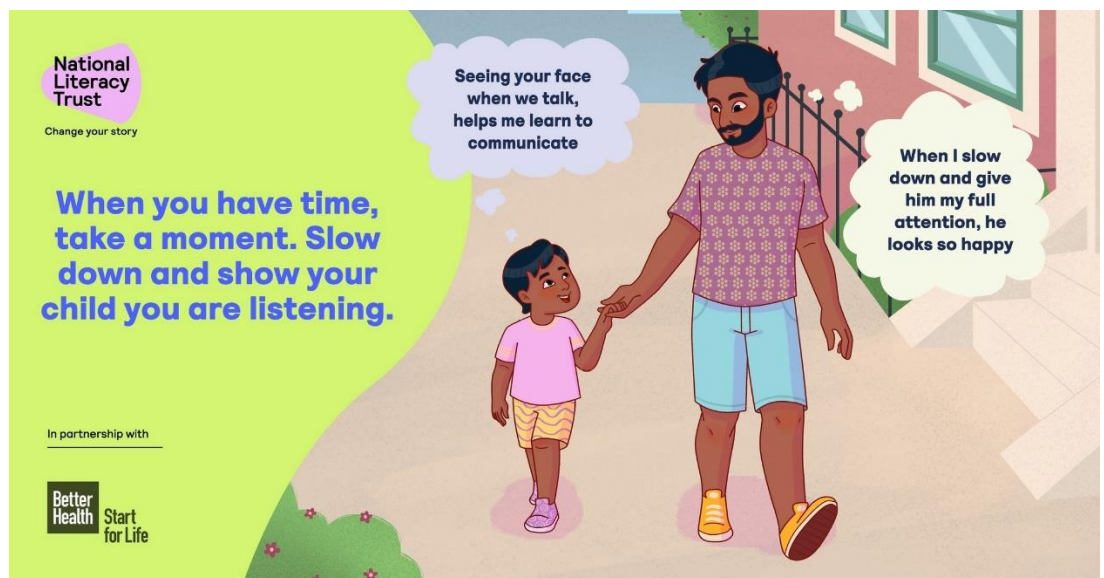
We hope they support you to look, listen and chat with your child anywhere, anytime!

Visit their [website](#) to download a copy and read along on your phone, or print at home.

You will also find translated copies of the trail in an additional 18 languages.



“Words for Life”



Croydon Holiday Activity and Food Programme

We are excited to announce Croydon's Holiday Activities and Food (HAF) Programme for summer 2024, which offer a range of enriching activities for all children including those with Special Educational Needs (SEN) and Additional Needs. Our goal is to ensure every child has the opportunity to participate in engaging and enjoyable activities during the summer holidays.



All of our summer programmes are designed to be inclusive and supportive of children with additional needs. Providers are trained and equipped to accommodate a variety of needs, ensuring that every child can fully participate and benefit from the activities offered. We understand that some children may require additional support to enjoy the programme fully. All organisations can request further assistance to bring in a one-to-one worker if required for a young person.

In addition to our general inclusive programmes, we have three SEN specific clubs located around the borough. These clubs are tailored to meet the unique needs of children with SEN, offering specialised activities and support structures to enhance their holiday experience. These clubs provide a safe and understanding environment, ensuring that children with SEN can enjoy their time and engage fully in the activities offered.

For more information and to register your child, please visit the unique link parents of eligible children will have received from "HolidayActivities", or by clicking [here](#).

National Autistic Society

Croydon Social Groups



Our social groups for autistic children and young adults are a relaxing space for people to meet and socialise and participate in a variety of activities.

- Lego Club Mondays 17:00-18:00 & 18:00-19:00
- Football Club Mondays 17:00-18:00 & 18:00-19:00
- Trampolining Club Wednesdays 17:15-17:45 & 18:00-18:30
- Youth Club Saturdays (Fortnightly) 10:00- 13:00

Eligibility

Age: From age 5 to 18

Contact: services@nas.org.uk





SUMMER SEND CLUB

Sensory & science Fun!

Free for FSM Students!

Location: Broadmead Primary school, Sydenham Road, CRO 2EA

Days: Tuesday to Thursday (8.30am - 1.30pm)

Prices: £30 per session or £100 for week

Breakfast | Healthy Snacks | Lunch | Water – All provided

Tue 30th July – Fri 22nd August



Arts and Sports



Indoor/Outdoor Sports - table tennis, exercise classes, team games



A range of arts and crafts workshops with keepsakes to take home



Hands-on building activities and games - knex meccano, lego, k

Sensory Fun Zones!



Kinaesthetic, visual & auditory sensory sand and water zone recreating a seaside experience



Auditory and tactile activities with music workshops sensory play areas and reading/calm corner

Food Science / Catch-Up Classes



Food science games, cookery classes & balanced diets & other fun food nutrition & food tasting activities



Maths and English - Support classes



11+ /SATs Mock Exam Revision (OPTIONAL)

Book Now!



020 7062 7123 / 07835 878 283

app.teachngo.com/leads/add/11035

brightfutures4all.com/schoolclub

Karen Bryson

@BF4Allteaching

@brightfutures4all



CROYDON





SEND AFTER SCHOOL CLUB

Unlocking Potential, Building Brighter Futures!



Location: Broadmead Primary Academy, Sydenham Road, Croydon CR0 2EA
Date: Thursdays Open at 3pm. Close: 5.30pm (Term Time only)
Who: For SEND students in Ks2 (Year 4-6) & Ks3 (Year 7)



October 2024 – Start date tbc

Sensory Fun Zones!



Fun - Board games, painting, building and Lego



Learning - kinesthetic, visual, auditory and tactile



Science / STEM - water, sand, sounds and textiles play-based learning activities!

Cakes and Conversation



Support network for parents over cake and tea!



Come along to connect with others / share your story / have a distraction!



Run by SEND teen/adults!



SEND young adults who have grown up with Bright Futures 4 All will run sessions alongside SEND specialist adults!



SEND young adults know first-hand what children need to feel supported and loved.



☎ 0207 062 7123 / 07835 878283

✉ admin1@brightfutures4all.com

🌐 brightfutures4all.com

🌐 Karen Bryson

🐦 @BF4Allteaching

📷 @brightfutures4all



COMMUNITY FUND

CROYDON

July 2024

6th July (10.00-14.00):
Park Hill and Learning Disability Carnival

Meeting point outside Fairfield Halls.

13th July (10.00-14.00):
Coombe Woods and Lloyd Park

Meeting point Lebanon Road tram stop.

20th July (10.00-14.00):
Morden Hall Park

Meeting point Lebanon Road tram stop.

27th July (10.00-14.00):
Addiscombe Railway Park and Wellbeing Day

Meeting point Enterprise Lounge.

Chill and Chat

Croydon Mencap also offers Chill and Chat sessions (term time only) for parents of children with additional needs aged under 5 at Malling Close Children's Centre (10.00-14.00).

Sessions include singing, movement to music, stories, playing with toys and lots of fun.

Family Advocacy and Support Team

For families of children and young people with disabilities and adults with learning disabilities. Services include advocacy, information, social events, support (including peer support and emotional support), training and workshops.

For more information, please contact info@croydonmencap.org.uk or call 0208 684 5890.

To view the full calendar of activities please click [here](#).

The graphic features the Croydon Mencap logo at the top left, with 'Croydon' in green and 'mencap' in pink. To the right, it says 'Funded by the Croydon South West London Integrated Care System' with a logo. Below this, a yellow speech bubble says 'present...' next to an illustration of a woman walking. A large pink box contains the title 'Strictly Come Walking'. Below that, a blue box states 'Sessions are every Saturday, meeting at 10am' with an illustration of three people walking. A yellow box contains the text: 'Our new walking group for adults with learning disabilities and their PAs/Carers is happening every Saturday! We will go to lots of beautiful places in Croydon and beyond! You can travel with us from central Croydon or meet us there. Also...'. Below this are several purple boxes: 'Free Pedometer after 2 sessions!', 'Health Checks', 'Buddy up for confidence building', 'Special guests to tell us what else is happening in Croydon', and 'Competitions and Certificates'. At the bottom right, a yellow box says 'Contact Emily for more details' with a photo of a woman and contact information: '07784 979 340' and 'emily@croydonmencap.org.uk'.



Carers Café

This is open from 10:30am to 12:30pm on Monday's, Wednesday's and Friday's. Come and enjoy a drink and a chat with other carers and our café volunteer.

Carers Support Centre Choir

Held on the second & last Wednesday of the month from 10:30am -11:45am – these are drop-in sessions, no need to book just sign in at the Advice desk.

Enjoy an uplifting and rejuvenating singing session to help you relax and give you a break from your caring role.

All voices welcome. Sessions are taught by our choral expert, Katie Rose.

Exercise class

Classes are held online every Tuesday (10.30-11.15am) for all fitness levels.

Sign up by emailing enquiries@carersinfo.org.uk or calling 020 8649 9339 (option 1).

You will be sent the joining link and a brief registration form.

JULY 2024 ACTIVITIES



Monday 01/07	Tuesday 02/07	Wednesday 03/07	Thursday 04/07	Friday 06/07
Carers Café 10.30 - 12.30 Benefits Advice Service by appointment	Bodyfit Exercise 10.30 - 11.45, online	Carers Café 10.30 - 12.30 Book Club 11.00 - 12.00		Carers Café 10.30 - 12.30
Monday 08/07	Tuesday 09/07	Wednesday 10/07	Thursday 11/07	Friday 12/07
Carers Café 10.30 - 12.30 Benefits Advice Service by appointment	Bodyfit Exercise 10.30 - 11.45, online KIDS Drop In 10.00 - 12.00 Bereavement Support Group 14.30 - 16.00	Carers Café 10.30 - 12.30 Carers Choir 10.30 - 11.45 Red Cross First Aid Session 10.00 - 11.30		Carers Café 10.30 - 12.30
Monday 15/07	Tuesday 16/07	Wednesday 17/07	Thursday 18/07	Friday 19/07
Carers Café 10.30 - 12.30 Writer's Group 13.30 - 15.00 Benefits Advice Service by appointment Cost of Living Surgery by appointment	Dementia Carers Support 14.30 - 16.00 Bodyfit Exercise 10.30 - 11.45, online	Carers Café 10.30 - 12.30		Carers Café 10.30 - 12.30
Monday 22/07	Tuesday 23/07	Wednesday 24/07	Thursday 25/07	Friday 26/07
Carers Café 10.30 - 12.30 Benefits Advice Service by appointment	Bodyfit Exercise 10.30 - 11.45, online	Carers Café 10.30 - 12.30 Carers Choir 10.30 - 11.45		Carers Café 10.30 - 12.30
Monday 29/07	Tuesday 30/07	Wednesday 31/07		
Carers Café 10.30 - 12.30 Benefits Advice Service by appointment	Bodyfit Exercise 10.30 - 11.45, online	Carers Café 10.30 - 12.30		

020 8649 9339 (option 1)
 enquiries@carersinfo.org.uk

For more information, please visit the website by clicking [here](#).



An autistic-led creative health and wellbeing social enterprise in Croydon.

We co-produce social, cultural & community projects & spaces for autistic, ADHD & AuDHD people like us. We are ambassadors for positive conversations around neurodivergence as difference not deficit. Our work is centred around care-led creativity, equitable access, individual autonomy & self advocacy.

Our current focus:

- Neurodivergent home educated kids aged 11-18
- Home educating parents
- Young adults aged 16-30
- Women and girls
- LGBTQIA+

What we offer:

- Creative arts workshops
- Creative games & play
- Peer support & mentoring
- Online communities
- Social events & meet-ups
- Volunteer opportunities

Current opportunities:

- Volunteer members for our Women's, Non-Binary & AFAB advisory group
- Allotment co-ordinators, weeders, plant whisperers

Consultancy work:

- Lived experience experts helping organisations who work with autistic people
- Access needs, equity, inclusion and belonging

ACOLLECTIVE.ORG.UK

For more information, please contact jill@acollective.org.uk

Autistic Youth Hub

Please also check out the Autistic Youth Hub. An autistic-led youth collective.

The Autistic Youth Hub are a group of autistic young adults aged 16-30: artists, gamers, performers, analysts, illustrators, activists, writers, students and more.

Our community is for young autistic and similarly neurodivergent adults without intellectual (learning) disability: able to live and work independently, how we choose, with varying degrees of support.

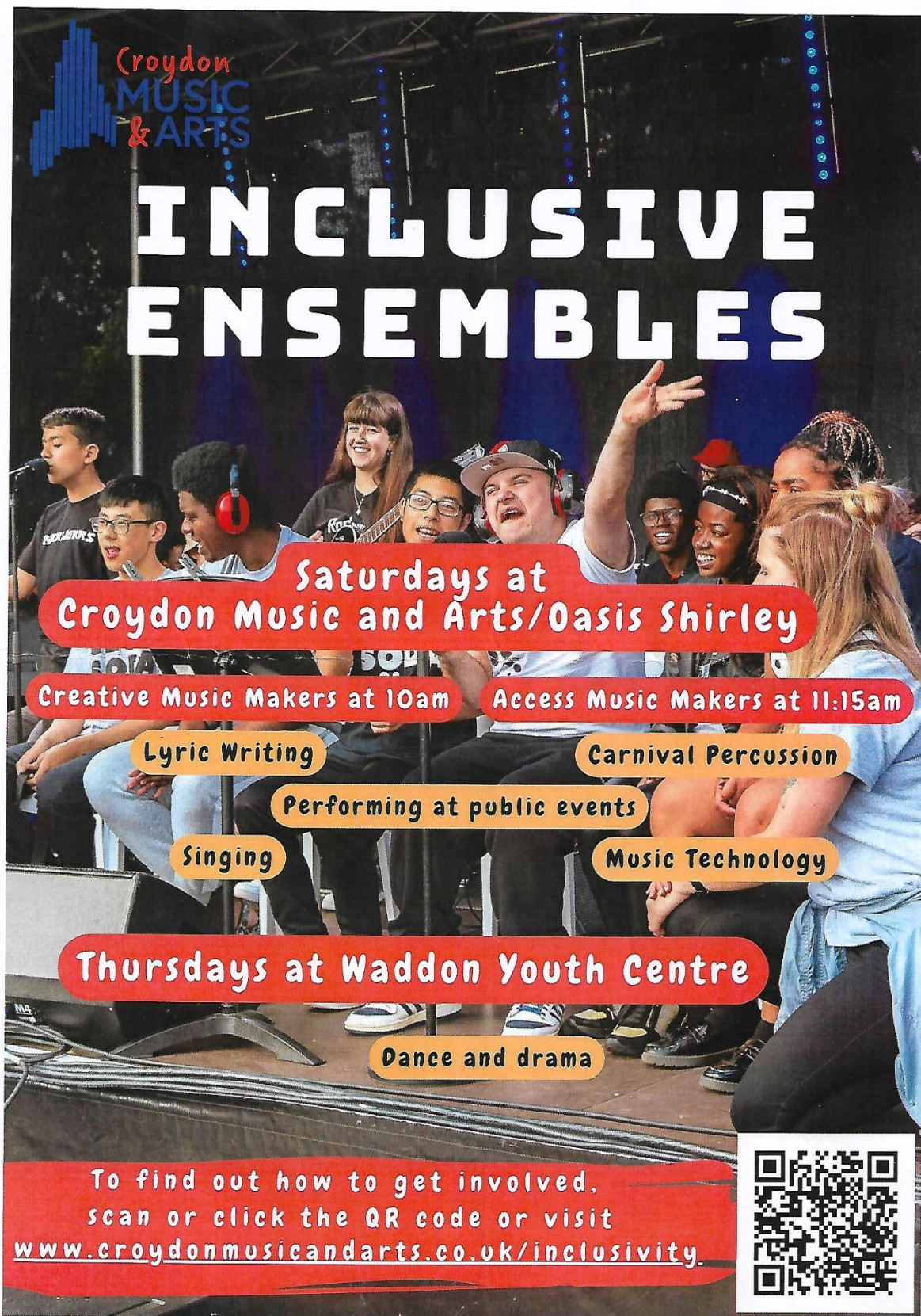
For more information please visit their website [here](#).



creative workshops for neurodivergent home educated kids aged 11-18

- Low support needs only
- Formal diagnosis not needed
- Trans, non-binary and LGBTQIA+ affirming
- Led by neurodivergent and autistic creatives





Croydon MUSIC & ARTS

INCLUSIVE ENSEMBLES

Saturdays at Croydon Music and Arts/Oasis Shirley

Creative Music Makers at 10am **Access Music Makers at 11:15am**

Lyric Writing **Carnival Percussion**


Performing at public events

Singing **Music Technology**

Thursdays at Waddon Youth Centre

Dance and drama

To find out how to get involved, scan or click the QR code or visit www.croydonmusicandarts.co.uk/inclusivity.



Crystal Palace FC - Recruitment Day

CPFC is thrilled to invite you to their Recruitment Day for match day roles for the upcoming 2024/25 season!

This is an exciting opportunity to be a part of a team and contribute to an unforgettable experience for fans and players.

Date: Saturday, 6th July 2024

Morning timeslots: 9:30 am, 10:00 am, 10:30 am, 11:00 am, 11:30 am, 12:00 pm

Afternoon timeslots: 13:30, 14:00, 14:30, 15:00, 15:30

You do not need to book your timeslot; simply come in at one of the listed times.

Location: Selhurst Park Stadium, SE25 6PU - Entrance Glaziers Bar

Available Roles:

- Steward
- SIA Steward
- Retail Catering Hub Leader
- Retail Catering Operators
- Kitchen Porter
- Chef
- Logistics Operative

If you have any questions, please email: application@cpfc.co.uk

Requirements:

You must be over the age of 18 for all roles. Unfortunately, you will not be allowed an interview if you are under 18 years old.

Dress code: Smart wear – you will not be allowed into the premises if you are not dressed appropriately.

We recommend bringing a paper copy of your CV.

If you are applying for a Stewarding role, you must be willing to register for and complete the NVQ Level 2 – Spectator Safety course.

Complete the application form using the application link below; you will not be able to have an interview without completing the application form.

For more information, please visit the [website](#).



Disabled Persons Railcard

The Disabled Persons Railcard is for people with a disability that makes travelling by train difficult. You will qualify if you meet one of the following criteria:

- receive Personal Independence Payments (PIP) or Adult Disability Payment (ADP)
- receive Disability Living Allowance (DLA) or Child Disability Payment (CDP) at either:
 - the higher or lower rate for the mobility component, or
 - the higher or middle rate for the care component
- have a visual impairment
- have a hearing impairment
- have epilepsy
- receive Attendance Allowance, Severe Disablement Allowance or Pension Age Disability Payment (PADP)
- receive War Pensioner's Mobility Supplement
- receive War or Service Disablement Pension for 80% or more disability
- buy or lease a vehicle through the Motability scheme



Please allow up to 5 working days for your Railcard application to be approved and if you choose a plastic card, 5 working days for your Railcard to be delivered.

For more information, please visit the [website](#).



Funded by the Department for Education and managed by Family Fund, the SFDC programme provides a wide range of grant items to families in England raising a disabled or seriously ill child or young person, and living on a low-income.

Grants for families living in England

Through the Support for Families with Disabled Children programme you can apply for items that will help meet your child's additional support needs and make family life easier.

You can request a kitchen appliance like a fridge, cooker, or washing machine, clothing or bedding for your child, sensory or play equipment, technology items such as tablets and laptops, or even a much-needed family break.













Eligibility

You can apply for an SFDC grant every 24 months.

To be eligible, you must also be:

- The main carer for a disabled or seriously ill child or young person aged 17 or younger
- Resident in England
- In receipt of benefits, or on a low income from working

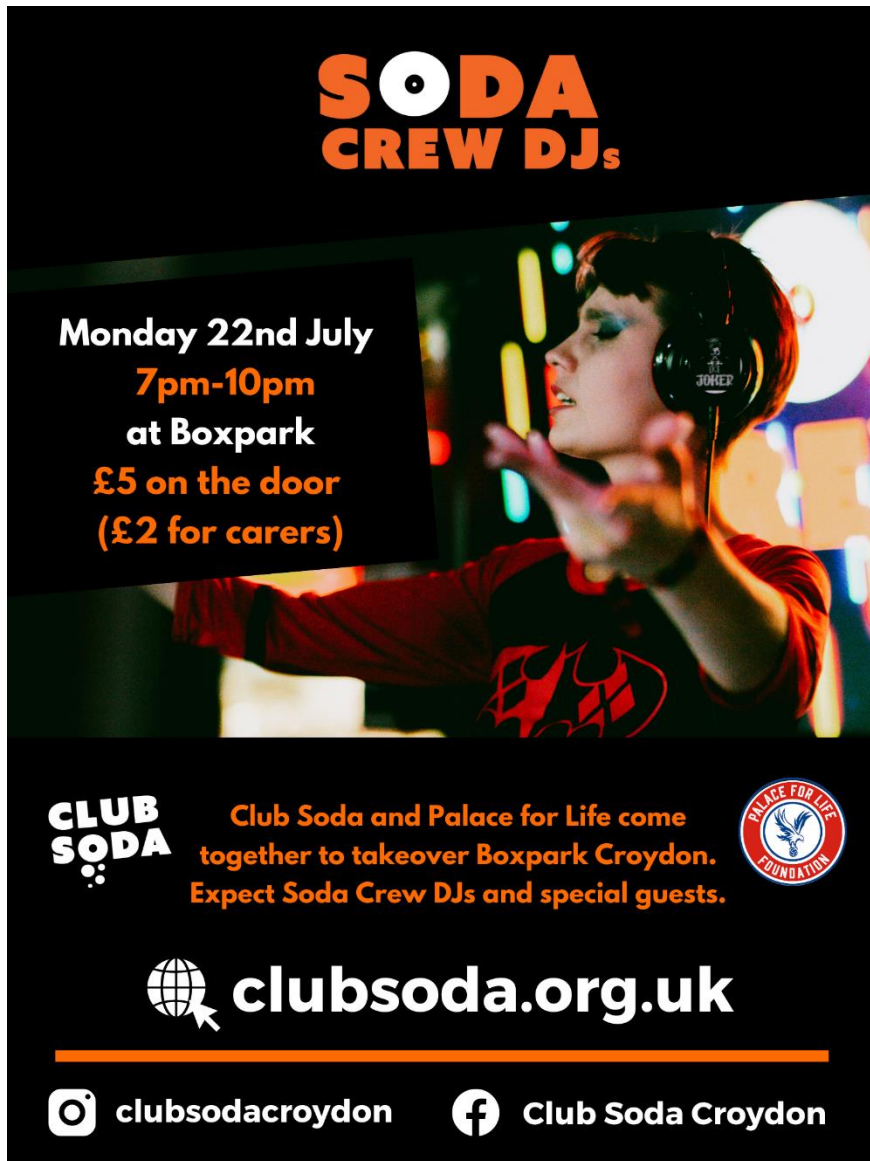
Grants you can apply for:

 Family breaks	 Clothing	 Sensory toys	 Games, books and music
 Computers and tablets	 <u>Days out</u>	 Games console	 Outdoor play
 Furniture and household	 Kitchen appliances	 Specialist trikes / bikes	 Clubs, hobbies and activities

For more information, please visit the [website](#).

Club Soda

The aim is to change Croydon's social scene with more accessible gigs, events and venues, the Music Industry with more representation of neurodiverse artists in mainstream spaces and people's attitudes towards people with Learning Disabilities.





**SODA
CREW DJs**

Monday 22nd July
7pm-10pm
at Boxpark
£5 on the door
(£2 for carers)

CLUB SODA Club Soda and Palace for Life come together to takeover Boxpark Croydon. Expect Soda Crew DJs and special guests.

Palace for Life Foundation

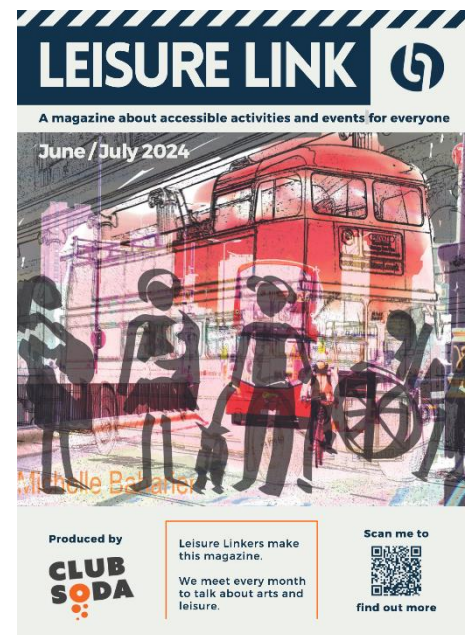
 **clubsoda.org.uk**


 **clubsodacroydon**  **Club Soda Croydon**

Leisure Link

Club Soda are excited to bring you Leisure Link, a new downloadable Magazine that lets you know what's going on in Croydon that is inclusive and accessible.

To find out more information, please visit the Club Soda [website](https://clubsoda.org.uk).



LEISURE LINK 


A magazine about accessible activities and events for everyone

June / July 2024

Michelle Bazzani

Produced by **CLUB SODA**

Leisure Linkers make this magazine. We meet every month to talk about arts and leisure.

Scan me to find out more 

Come join us at
Croydon's 2nd

LEARNING DISABILITY CARNIVAL

SATURDAY, 06 JULY, NORTH END,
CROYDON, CRO 1LP
(main entrance to Whitgift Centre and Centrale)

Find out about activities and events in
Croydon for people with learning disabilities.

11:00 - 17:00

Activities

Entertainment, Dance, DJ's, Poetry, Arts & Crafts, Face Painting, Hand Massage, Health Checks, Stalls, Food & Drink, Cakes, Jerk BBQ, Slushies.
Meet other local people, local charities, community groups, Croydon Council, and NHS services.

For more information:
victoria.kamara@cvalive.org.uk / 07578908631
Stella.osan@mencap.org.uk / 07977055465

A2ndvoice CIC



COMMUNITY

AUTISM FAMILY FUN TIME

Saturday 13 July, 2024
2.30 - 6pm

Reserve a space

FREE



Play, stay and connect with other families with similar experiences, sharing your lived experiences and how we can make a difference for our children and young people.



Tooting Leisure Centre London, SW17 ONE
Free parking available (register car in foyer)



Visit Our Website www.a2ndvoicecic.co.uk

A2ndvoice CIC



AUTISTIC SWIMMING FOR FUN U12'S

Book now



FREE Entry:
Autistic Child & Carer only

EVERY FRIDAY
2 - 30 AUGUST 2024
1.30 - 2.30PM

Safe space for **autistic children and carers** swimming for fun. Responsible adult to go into pool with the child.

Limited spaces for one autistic child and 1 carer only. **Wristbands** to be collected at reception before entering the pool.

Essential to book in advance



Community Hall
New Addington Leisure Centre
88 Central Parade, Croydon, CRO 9JB
Free Parking available: Register in foyer

For further details:
+44 (0) 07947 198 362
holidays@a2ndvoice.com




A2ndvoice CIC



AUTISTIC FAMILIES AUGUST HOLIDAY CLUB U17'S

Book now



FREE Entry:
Autistic children and their families

EVERY FRIDAY
2 - 30 AUGUST 2024
10 - 2PM

Safe space for **autistic children and young people with their families** to take part in a range of activities throughout the day. Light refreshments will be provided. **Siblings welcome**

Indoor activities: Bouncy castle, soft play, train-sets, board games, arts and crafts and sensory space.

11 - 1.30pm Drumming, Singing and Dance (All ages)

11-2pm Whizz Fit: Laser Tagging and Dodgeball (8 - 11 years)

12 - 1.30pm Pop Up Arcade with Game Host (All ages)

Parent carers required to stay
Essential to book in advance



Community Hall
New Addington Leisure Centre
88 Central Parade, Croydon, CRO 9JB
Free Parking available: Register in foyer

For further details:
+44 (0) 07947 198 362
holidays@a2ndvoice.com





Get in Touch

SEND Local Offer

Services, advice, information and what's on in and around Croydon.

<https://localoffer.croydon.gov.uk/>

Croydon SEND Transformation

sendtransformation@croydon.gov.uk



GET IN TOUCH